



Relationship with Family - Resources



Blackfoot men were usually away from camp, hunting for buffalo, deer and elk. These were the best animals to eat. The men also kept watch for any intruders into our territory.
Glenbow Archives NA-17000139



Relationship with Family - Resources

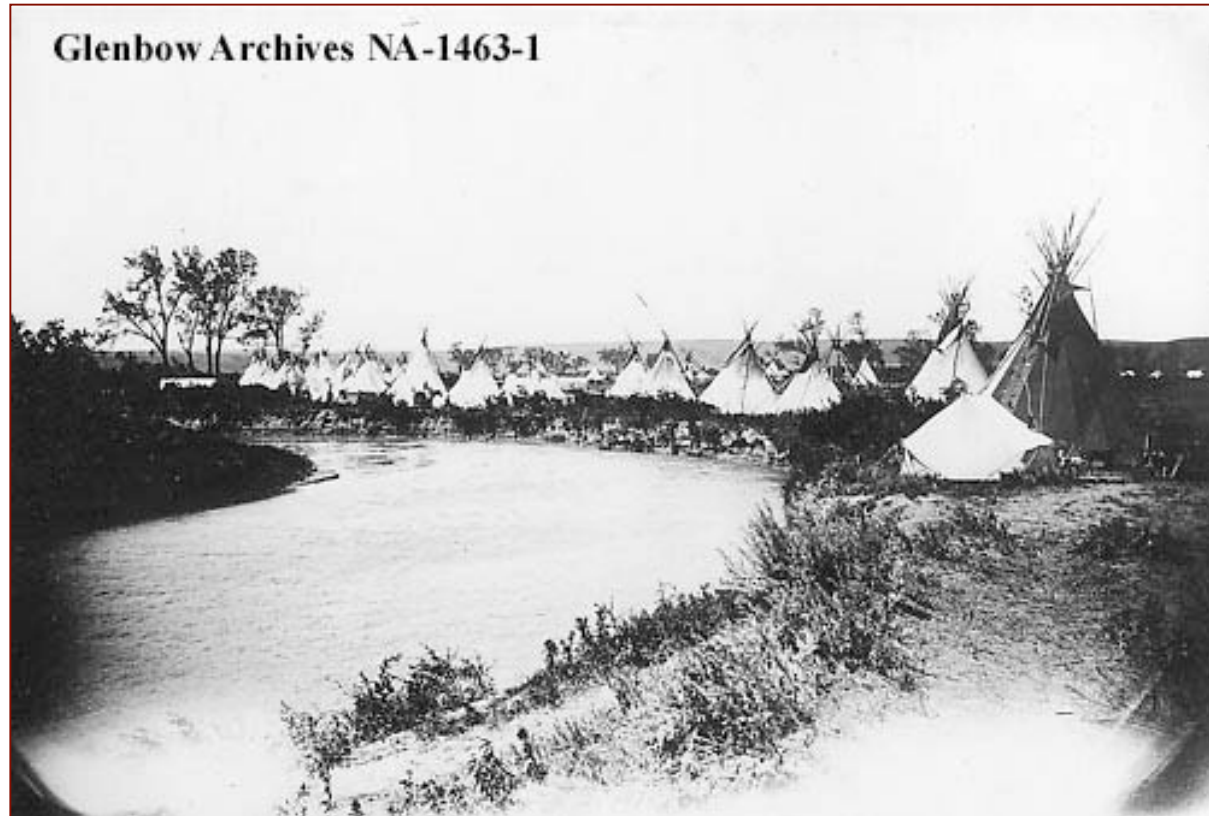


The Blackfoot used a travois to move their belongings. This one is pulled by a horse, but dogs were also used to pull smaller travois.

Photograph by Edward Curtis
Glenbow Archives NA-1700-156



Relationship with Family - Resources



Blackfoot camps were composed of members of an extended family and other people who may have joined the clan. The arrangement of the tipis was not strictly defined in these camps, although all of them faced east. This allowed the morning prayers to travel towards the rising sun, helping it to come above the horizon for another day.

Glenbow Archives NA-1463-1



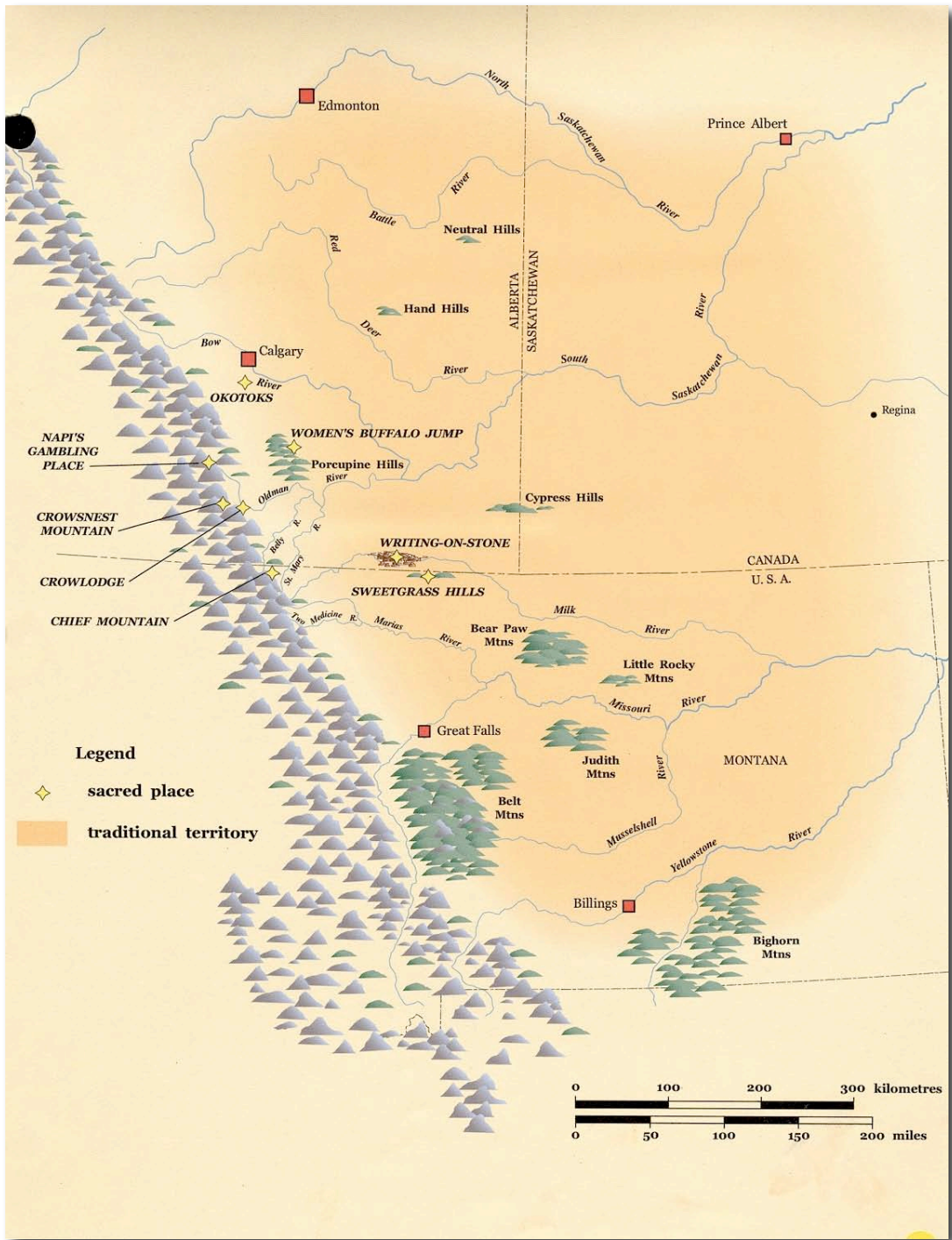
Relationship with Family - Resources



Many Blackfoot tipis were painted with special designs that came to people in dreams. These designs helped the family have a good life.
Glenbow Archives NA-919-37



Relationship with Family - Resources



The Blackfoot's traditional territory spread eastward from the Rocky Mountains, across the northwestern plains.

Courtesy of Glenbow Museum



Relationship with Family - Resources



Dogs were also used to pull travois.
Glenbow Archives NA-1463-1